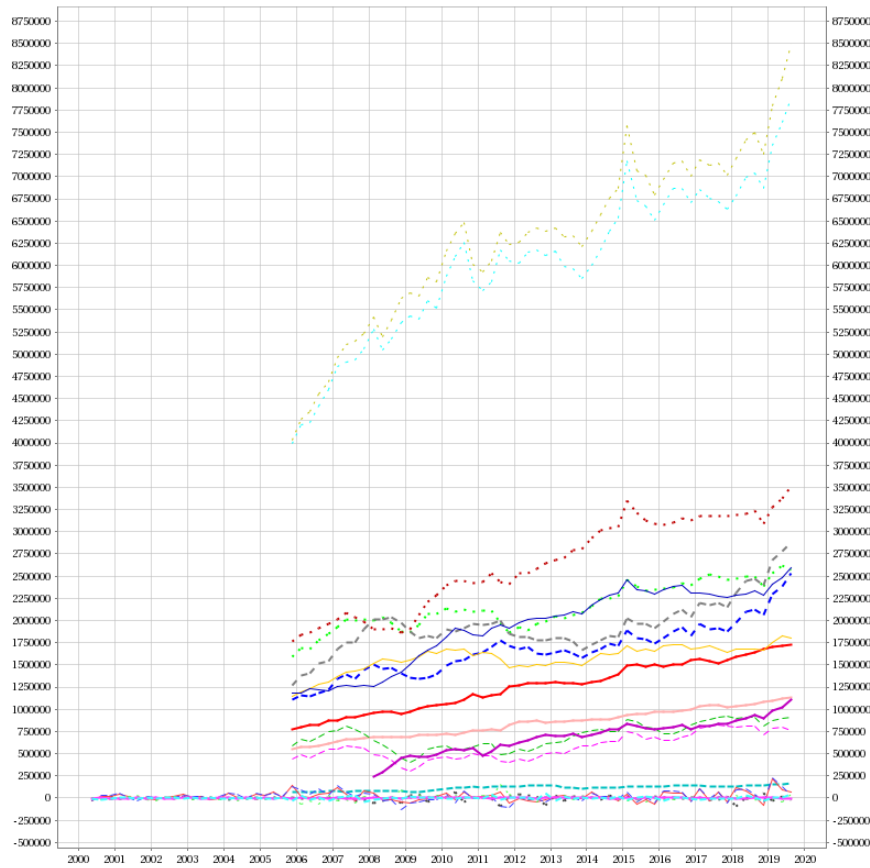


Dataset: Balance of payments- 6th manual; Reference area - ISO2: France



<ul style="list-style-type: none"> <li>International investment position - Direct Investment - According to mixed valuation - Total economy - Assets (Net acquisition of) - France vis-à-vis Rest of the World - Not seasonally adjusted</li> </ul>	<ul style="list-style-type: none"> <li>International investment position - Other Investment - Total economy - Assets (Net acquisition of) - France vis-à-vis Rest of the World - Not seasonally adjusted</li> </ul>
<ul style="list-style-type: none"> <li>International investment position - Portfolio Investment - Total economy - Assets (Net acquisition of) - France vis-à-vis Rest of the World - Not seasonally adjusted</li> </ul>	<ul style="list-style-type: none"> <li>International investment position - Portfolio Investment - Debt securities - Total economy - Assets (Net acquisition of) - France vis-à-vis Rest of the World - Not seasonally adjusted</li> </ul>
<ul style="list-style-type: none"> <li>International investment position - Portfolio Investment - Equity and investment fund shares/units - Total economy - Assets (Net acquisition of) - France vis-à-vis Rest of the World - Not seasonally adjusted</li> </ul>	<ul style="list-style-type: none"> <li>International investment position - According to mixed valuation - Total economy - Assets (Net acquisition of) - France vis-à-vis Rest of the World - Not seasonally adjusted</li> </ul>
<ul style="list-style-type: none"> <li>International investment position - Direct Investment - According to mixed valuation - Total economy - Liabilities (Net incurrence of) - France vis-à-vis Rest of the World - Not seasonally adjusted</li> </ul>	<ul style="list-style-type: none"> <li>International investment position - Other Investment - Total economy - Liabilities (Net incurrence of) - France vis-à-vis Rest of the World - Not seasonally adjusted</li> </ul>
<ul style="list-style-type: none"> <li>International investment position - Portfolio Investment - Total economy - Liabilities (Net incurrence of) - France vis-à-vis Rest of the World - Not seasonally adjusted</li> </ul>	<ul style="list-style-type: none"> <li>International investment position - Portfolio Investment - Debt securities - Total economy - Liabilities (Net incurrence of) - France vis-à-vis Rest of the World - Not seasonally adjusted</li> </ul>
<ul style="list-style-type: none"> <li>International investment position - Portfolio Investment - Equity and investment fund shares/units - Total economy - Liabilities (Net incurrence of) - France vis-à-vis Rest of the World - Not seasonally adjusted</li> </ul>	<ul style="list-style-type: none"> <li>International investment position - According to mixed valuation - Total economy - Liabilities (Net incurrence of) - France vis-à-vis Rest of the World - Not seasonally adjusted</li> </ul>
<ul style="list-style-type: none"> <li>Net external debt - Total economy - Net Liabilities (Liabilities minus Assets) - France vis-à-vis Rest of the World - Not seasonally adjusted</li> </ul>	<ul style="list-style-type: none"> <li>International investment position - Reserve Assets - Central bank - Assets (Net acquisition of) - France vis-à-vis Rest of the World - In all currencies except national currency, SDRs, gold - Not seasonally adjusted</li> </ul>
<ul style="list-style-type: none"> <li>Financial account - Other investments - Central bank - Net (Assets minus Liabilities) - France vis-à-vis Rest of the World - Not seasonally adjusted</li> </ul>	<ul style="list-style-type: none"> <li>Financial account - Other Investment - Monetary financial institutions other than central bank - Assets (Net acquisition of) - France vis-à-vis Rest of the World - Not seasonally adjusted</li> </ul>
<ul style="list-style-type: none"> <li>Financial account - Other Investment - Monetary financial institutions other than central bank - Liabilities (Net incurrence of) - France vis-à-vis Rest of the World - Not seasonally adjusted</li> </ul>	<ul style="list-style-type: none"> <li>Financial account - Other Investment - Monetary financial institutions other than central bank - Net (Assets minus Liabilities) - France vis-à-vis Rest of the World - Not seasonally adjusted</li> </ul>
<ul style="list-style-type: none"> <li>Financial account - Other investments - General government - Net (Assets minus Liabilities) - France vis-à-vis Rest of the World - Not seasonally adjusted</li> </ul>	<ul style="list-style-type: none"> <li>Financial account - Other investments - Sectors other than general government and MFIs - Net (Assets minus Liabilities) - France vis-à-vis Rest of the World - Not seasonally adjusted</li> </ul>



Webstat Printout

*source* Banque de France (France)