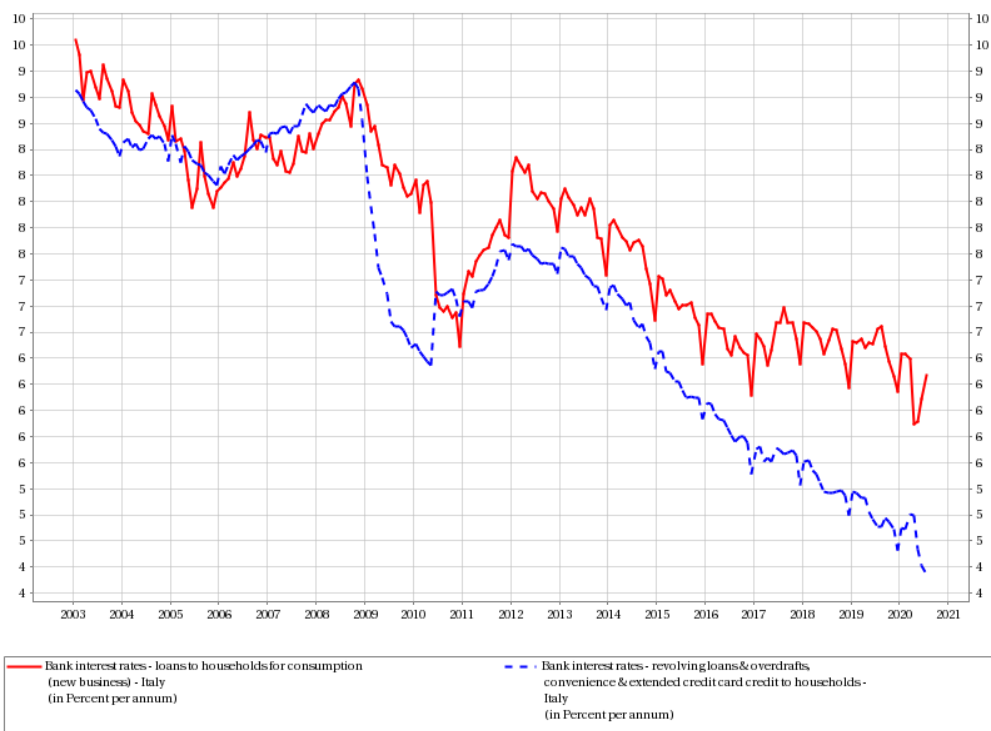


Dataset: Interest Rates - Euro area; Frequency: Monthly; Reference area - ISO2: Italy; Reference sector breakdown: Credit and other institutions (MFI except MMFs and central banks); Maturity origin: Total; MFI interest rate data type: Annualised agreed rate (AAR) / Narrowly defined effective rate (NDER); Amount category: All amounts; Counterpart sector: Households & NPISH (S14 & S15); Currency of transaction: Euro; IR business coverage: New business



source Banca d'Italia